

CFE MARCH NEWSLETTER

Colors for Earth, LLC

New Product Release

Volume 1, Issue 2

March 23, 2010

Inside this issue:

Greenware Application	2
Packaging	3
Bisque Application	3
Brush Strokes on Designer Lava Stone	4
Color Strokes under Designer Lava Stones	5
Relief Motif with Designer Lava Stones	5
Company Information	6

Special points of Interest

- Textured Glazes for greenware or bisque.
- Not Recommended for food surfaces.
- Apply color under them for different effects.
- Brush stroke on raw glaze before firing.
- Carve design through raw glaze.

Designer Lava Stone Glazes

Are textured glazes that can be used on greenware or bisque.

They are non-moving textured matt glazes. When fired small craters open up to show the bisque underneath.

You can decorate on top of them with our Color Concentrates, Color Stroke underglazes or "Relief Motif" for build up designs as shown on vase.

Firing Range:

- Ceramic—Cone 04-06
- Stoneware—Cone 5-6

Application Suggestions:

- Fan Glaze Brush
- Sponge

Stoneware Application:

When fired to cone 5-6 on stoneware/porcelain you will get a matt glaze.

Shading or Brush Strokes can be added with:

- Color Concentrates
- Color Strokes

Ceramic Uses:

- Greenware or cone 04 bisque.
- Color Strokes are recommended for a base color under Lava Stones to change the color of the glaze slightly. The color that is under them will show through when the craters open up.
- Relief Motif is recommended for design build up.
- Not recommended for the inside of food containers.



Southwest Pot shown here is by
BJ's Molds #BJ288

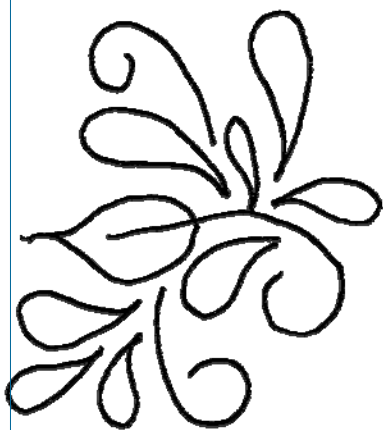
Molds by BJ Mold Co.
www.bjmolds.com
505-294-1951



*Designer Lava Stone
glazes are great for
southwest designs,
stone look and much
more!!!*

Molds by Colors for Earth
www.colorsforearth.com
866-408-5020

Ball/Marble shown here is by CFE.
Mold # C222 Medium Ball Mold



Pattern for Purple Marble shown
here.

Greenware Application Projects

This technique was done on greenware.

- Sketch the design on greenware.
- Carve out the pattern with wire loop or sgraffito tool.
- For this piece I chose **DLS402 White** for the top section and every other small diamond shape. The top section is shaded with **CC164 Mountain Pine** against the gold band area.
- Large diamond shape is **DLS487 Raw Sienna**, shaded with **CC186 Burnt Sienna**.
- Green areas are **DLS464 Pine**. All Designer Lava Stones have 3-4 coats applied.
- Band top edge with **CC164 Mountain Pine**.
- On the gold areas you can either spot glaze with 3 coats of **CG900 Crystal Clear** or leave blank.
- Stilt and fire to witness cone 04. This piece needs to be stilted because it is a glaze. Yes!! you can stilt greenware!!
- If you didn't glaze the gold area in greenware, you will need to glaze with 2 coats of **CG900 Crystal Clear** if you didn't glaze in greenware.
- Roll the inside of vase with **CGE580 Milk Chocolate**.
- Stilt and fire to witness cone 06.
- Apply fired gold with dedicated brush and fire to witness cone 018.



This piece was created on greenware.

- Apply 4 coats of **DLS436 Purple** to ball.
- Sketch or transfer pattern.
- Using a wire loop tool carve out the swirls that will be gold later.
- With a #4 round create comma stroke pattern with **CC143 Sapphire Blue**.
- Stilt and fire to witness cone 04.
- Where the swirls were carved out, glaze with 2 coats of **CG900 Crystal Clear** if you didn't glaze in greenware.
- Stilt and fire to witness cone 06.
- Apply fired gold with dedicated gold brush and fire to witness cone 018.



Bisque Application

For this piece I applied a color underneath the Designer Lava Stone, **DLS436 Purple**.

- When colors are applied under the Lava Stones it will change the appearance of the color.
- For instance this piece has **CS640 Navy Blue** under the **DLS436 Purple**. It tends to give it a deeper purple color and where the glaze opens up it will show the navy color under it.
- This piece features our "Relief Motif" and Color Concentrates for design decoration.

This technique can be found in our **Class-in-a-Bags** technique packets. This CIB includes a box by Renee Gehman that features our Aged Metal Technique as well as other background choices. Kits are available for this piece also, see below.

CIB #CBPM071—Price \$12.50

Complete Package:

Retail Price \$57.90

(Includes, bisque vase, 10 color products and CIB Instruction packet.)

Sale Price \$40.53 (30% savings)

Shipping: \$10.70

Product Package:

Retail Price \$50.40 (Includes all 10 color products and CIB Instructions)

Sale Price \$35.28 (30% savings)

Shipping \$10.70



Vase by Duncan 04' Bisque.

"Relief Motif" can be applied to unfired or fired Designer Lava Stones.

Packaging

Available in:

- 4 oz. jars (Retail \$5.00)
- 8 oz. bottles (Retail \$9.00)
- 16 oz. bottles (Retail \$16.00)

More information can be found on our web site. www.colorsforearth.com



Molds by Riverview
Mold Co.
www.riverviewmolds.com
319-668-9800

Vase shown on the right is by
Riverview Molds # 2025

*Relief Motif works
great on top of fired
Designer Lava
Stones.*

Vase shown below is by
Petro Mold Company
Mold # C172 Hurricane Pot



Molds by Petro Mold Co.
www.petromolds.com
814-796-6635

Fired Designer Lava Stone

Working on cone 06 FIRED Designer Lava Stone.

- Clean greenware and fire to witness cone 04.
- Roll glaze inside of vase with **CGE501 Black Patent**.
- Apply 4 coats of **CGE464 Pine** Lava Stone to the outside of vase.
- Stilt and fire to witness cone 06.
- Apply pattern to piece.
- Tint "Relief Motif" with orange Color Concentrate to create orange poppies. Apply 1-2 coats on various petals.
- Stroke orange Color Concentrate over petals to intensify the color.
- Shade petals with red orange and red Color Concentrates. This will define each petal.
- Tint "Relief Motif" with green Color Concentrate for flower centers and leaves.
- Shade green areas with darker green Color Concentrate.

- Detail with black Color Concentrate.
- Stilt and fire to witness cone 06.

TIP: For those teaching seminars where you have to prep the piece and travel with them this is great. Prep with base glaze and fire. The student doesn't have to sit and watch glaze dry they can work on design area and glaze application can be demonstrated.



Brush Stokes on Designer Lava Stone

This piece was created on bisque.

- Apply 3-4 coats of **DLS402 White** on cone 04 bisque.
- Apply pattern.
- Create designs with Color Concentrates. This design was completed with brushstrokes and CC's. One Coat.
- Centers of flower are created with "Relief Motif" for a raised center.
- Stilt and fire to witness cone 06.

- Designs can be done with Color Strokes also.



Relief Motif

This is a specialty product that can be used on:

- Designer Lava Stone
- Color Stoke
- Glass
- China Blanks
- Matt Glazes

It can be tinted with:

- Color Concentrates
- Color Strokes
- Glass Colors

When tinted it is the perfect way to apply designs to the "Designer Lava Stones".

Many colors can be achieved for design work.

NOTE:

"Relief Motif" is **"LEAD-FREE"!!!!**



Side view of Relief Motif on disk.

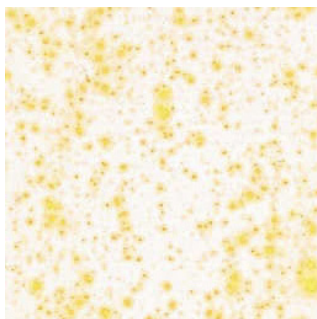
In most cases the "Relief Motif" is not outlined. This is because of its raised texture.

Designer Lava Stones with Color Strokes applied under.

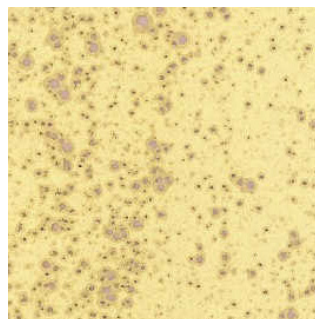
Below are examples of some color combinations. Colors Strokes are applied 2 coats underneath the Lava Stones.



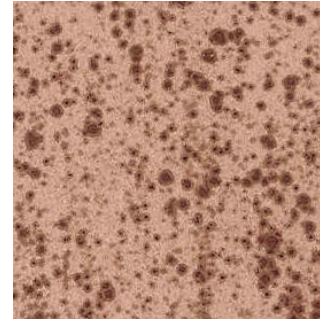
DLS402 White/
CS601 Coal Black



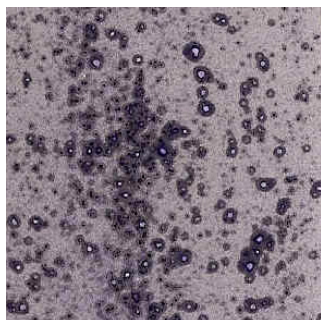
DLS402 White/
CS623 Buttercup



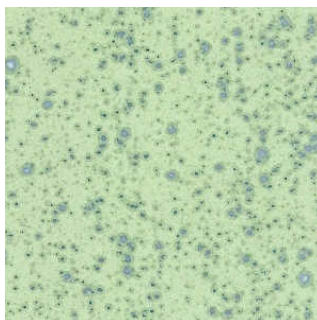
DLS407 Ivory/
CS638 Orchid Bloom



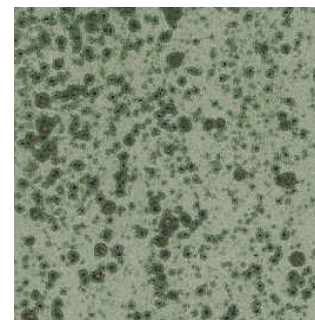
DLS431 Mauve/
CS632 Deep Crimson



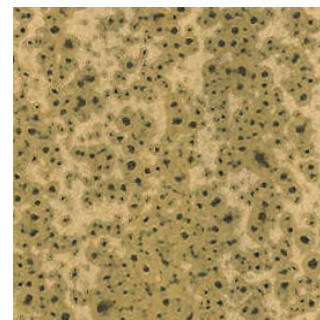
DLS436 Purple/
CS640 Navy Blue



DLS455 Ocean Blue
Green/CS651 Cerulean
Blue



DLS464 Pine/
CS681 Warm Wood



DLS487 Raw Sienna/
CS680 Burnt Umber

Colors for Earth offers "Free Techniques" as well as a "Classroom" section on our web site.

A variety of projects are offered that will help you become more familiar with our products and their uses.

[www.colorsforearth.com/
TechFreebies.htm](http://www.colorsforearth.com/TechFreebies.htm)

[www.colorsforearth.com/
Classroom.htm](http://www.colorsforearth.com/Classroom.htm)

We have projects published in the "Fired Arts and Crafts" magazine by our CFE Licensed Associates.

Get your subscription today at
www.jonespublishing.com

COLORS FOR EARTH, LLC

Meeting your "Fired Arts Needs"



Colors for Earth, LLC
104 Finneyoaks Lane
Weatherford, TX 76085

Phone: 817-677-5020
Fax: 817-221-9309

Email: ceramicsbypaula@prodigy.net

WWW.COLORSFOREARTH.COM

January 2010 "Fired Arts and Crafts" issue has a projects by CFE Licensed Associate, [Renee Gehman](#). You can download a copy of her "Snowman Box" listed on our "Freebies" page of the web site.

A glass project was featured in December 2009 also. You can download a copy of this article on our "Freebies" page also.

Keep watching for other projects in months to come featuring ceramics and glass.



Artist: Renee Gehman

"Snowman Box"

Email:
renee@peggyandreenees.com



Artist: Paula McCoy

"Ribbon & Holly Dish"

Location: We are located northwest of the Dallas/Ft. Worth area.
Hours—8:30 a.m. to 5:00 p.m. Central Standard Time.

We carry fired color products including:

- Translucent Underglazes (Color Concentrates)
- Opaque Underglazes/Made for Bisque Color (Color Strokes)
- Non-toxic and food safe Glazes
- Designer Lava Stone Glazes
- Raku Glazes
- Piping Products (Clay Dimensions)
- Fired Glass Color
- Technique Packets (Class-in-a-Bags)
- Brushes
- Stamps
- Turn Tables
- Kilns

We offer a dealer program for retail, home studios and finished ware. CFE Dealers are assigned and have access to our trained CFE Licensed Associates that can offer seminars in your area, product and technical support. Call our office and ask for details!!

If you have a subject you would like to see in an upcoming newsletter, email us your suggestions.

Paula & Burt McCoy