

# Designer Lava Stone Glazes

1-14-11



**Majolica work:** Lava Stone glazes can be used under design work as base glaze. Remember that the glaze is textured and this will effect your design.

Apply 3-4 smooth and even coats on ware. Color Concentrates, Color Strokes and other Lava Stone colors can be applied over these glazes. They will be matt in finish unless you add CSP01 Gloss Medium to Color Concentrates or Color Strokes for a glossy look to stroke work.

CSP70 Relief Motif can be used for build-up design work on top of these glazes on greenware, bisque or on top of the glaze fired to O6. If glaze has been fired already you will do design work with Relief Motif and re-fire to cone O6.

**Tinting:** When tinting **DLS402 White Lava Stone** you should never go more than 50/50 with Color Concentrate and Lava Stone. We recommend 2 parts Lava Stone white and 1 part Color Concentrate.



Endless colors at your fingertips. You can even create a red lava stone color and many more as shown here. Colors listed below each chip is the color used to tint the DLS402 White Lava Stone. Tinted colors applied to greenware tend to have larger crater openings than when applied to bisque. These samples were applied to greenware.



CC112 Candy Apple Red



CC116 Florida Orange



CC122 Lemon Peel



CC137 Bright Violet

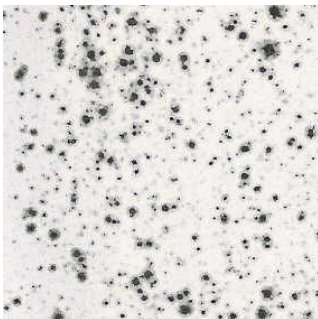


CC143 Sapphire Blue

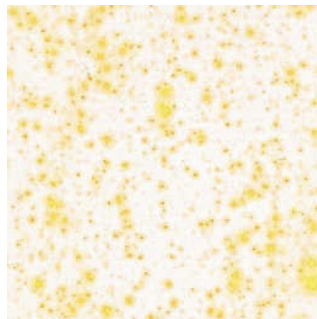


CC151 Cerulean Blue

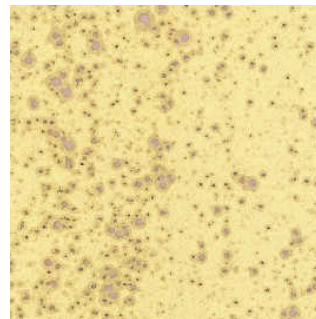
Below are examples of some color combinations. Colors Strokes are applied 2 coats underneath the Designer Lava Stone Glazes.



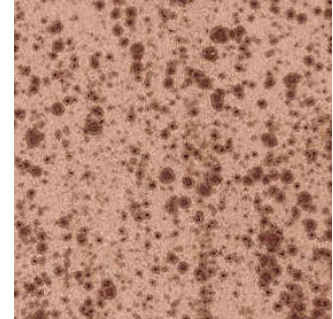
DLS402 White/  
CS601 Coal Black



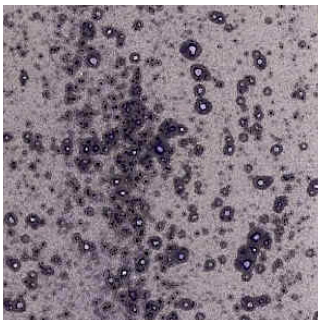
DLS402 White/  
CS623 Buttercup



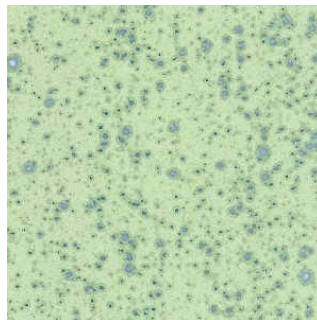
DLS407 Ivory/  
CS638 Orchid Bloom



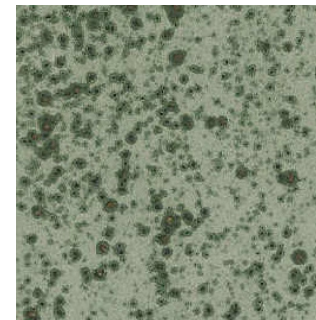
DLS431 Mauve/  
CS632 Deep Crimson



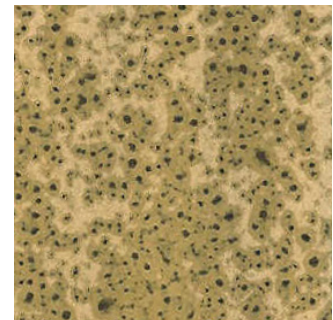
DLS436 Purple/  
CS640 Navy Blue



DLS455 Ocean Blue  
Green/CS651 Cerulean  
Blue



DLS464 Pine/  
CS681 Warm Wood



DLS487 Raw Sienna/  
CS680 Burnt Umber