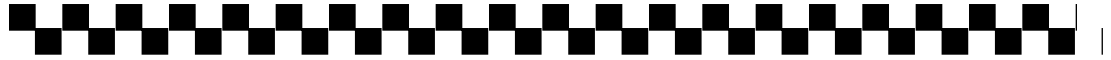




# Color Stroke Stamping

## The Basics

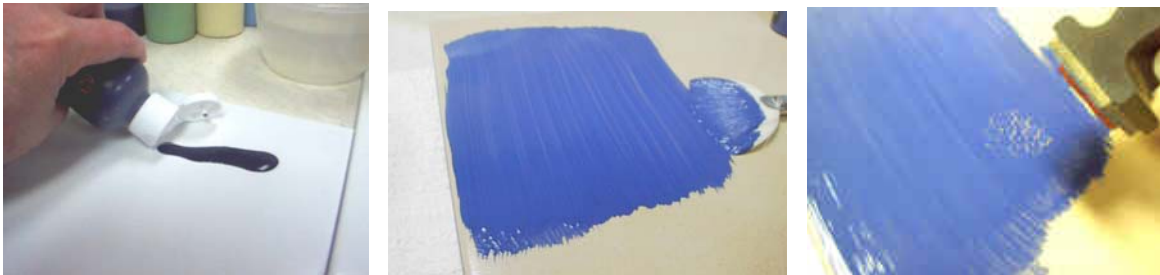


What you will need when creating Rubber Stamped designs with Color Strokes made for bisque underglazes:

1. A large tile for wet color palette.
2. A Fan Brush, goat hair is recommended.
3. A hydra sponge and small (old) shader brush for cleaning tools.
4. A tile, to which you have attached a strip of self-sticking felt (*this is available in craft departments of discount stores and some hardware stores.*) Remove the backing and stick to tile.
5. Color Strokes made for bisque Underglaze Stamping Inks.
6. Rubber Stamps.
7. "04" bisque (plain canvas design). Make sure to wipe with a damp sponge to remove any dust.
8. Squeeze color into a strip on your tile. Do not add water at this point.

Using your fan brush, work the color in the jel state back and forth on the tile until you have a thin, almost transparent smooth layer of color.

We have found that a 6 x 4 area of color is a desired palette size of color. Preparing your original palette of color can take as long as 35 seconds.. It is worth the effort. !!



9. Press your tool into the color. You do not have to press hard, in fact the harder you press the more chance you have of sliding. One firm press is all that is required. NOTE: the condition of your color on the palette is correct, if the tool leaves a clear, crisp impression in the color. If the color begins to fill back in on the palette your color is probably too thin. Go back to your fan brush and continue to spread the color out more on your palette.



10. The above two steps are show together, because it will save you time and clean up as you are working is you do these two steps as one. Press the tool on the bisque, then immediately make a press on to your felt covered tile. The press off onto the felt will remove any excess color from the tool before reloading. A build up of color will occur on the face of the tool, if you do not press off onto the cleaning felt after each impression. So make these two steps as one.
11. Your next impression into the color should be in a location next to your last impression. Do not overlap. To get the most impressions out of each palette, try to stay in a sequence.
12. When you have completed your stamping you can apply a wash of color on top of the stamped areas to color them if desired. This needs to me a very thin wash of color, taking care not to over work the stamped impression.
13. Color can be applied under a stamped area before stamping is desired.



14. When using the Color Strokes you can begin the glazing process immediately.

**Colors For Earth**  
104 Finneyoaks Lane  
Weatherford, TX. 76085  
817-677-5020  
866-408-5020 (Orders Only)  
[www.colorsforearth.com](http://www.colorsforearth.com)

